

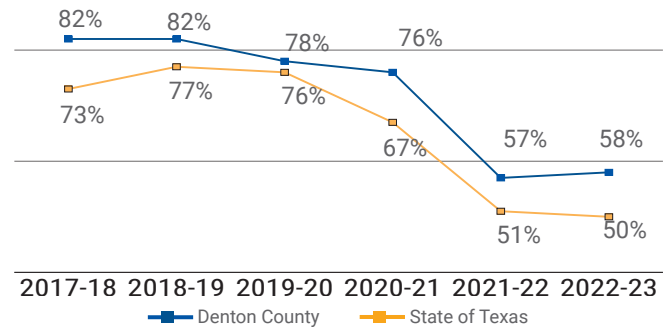


COMMUNITY NEEDS ASSESSMENT AT A GLANCE

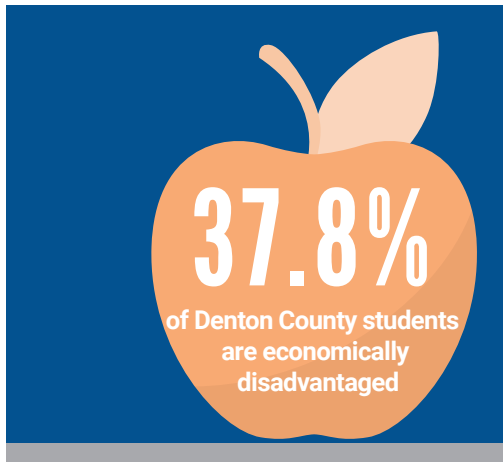
CHILDREN



PERCENTAGE OF ALL THIRD GRADERS READING AT GRADE LEVEL: DENTON COUNTY VS. STATE



Third grade reading scores are predictive of both graduation and incarceration rates. Both locally and statewide, the proportion of third-graders reading at grade-level is falling.



15 CONSECUTIVE YEARS THE NUMBER OF ECONOMICALLY DISADVANTAGED STUDENTS IN DENTON COUNTY HAS INCREASED.

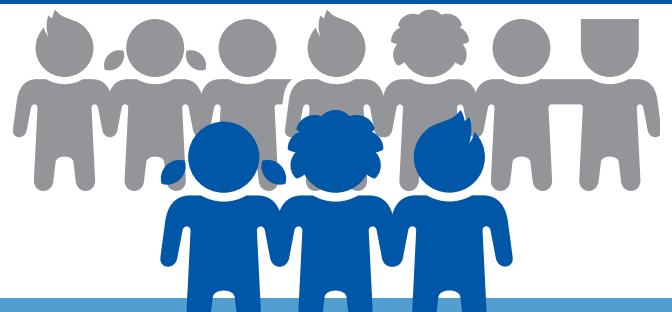


2 in 5 DENTON COUNTY STUDENTS ARE AT RISK OF DROPPING OUT OF SCHOOL

From March 2020 to September 2021

**DENTON COUNTY-BASED
CHILDCARE CAPACITY**

DROPPED **24.5%**



Nearly 7 of 10 foster care children are placed OUTSIDE of Denton County due to a lack of placement options.

FAMILIES

YOU KNOW ALICE



ASSET
LIMITED



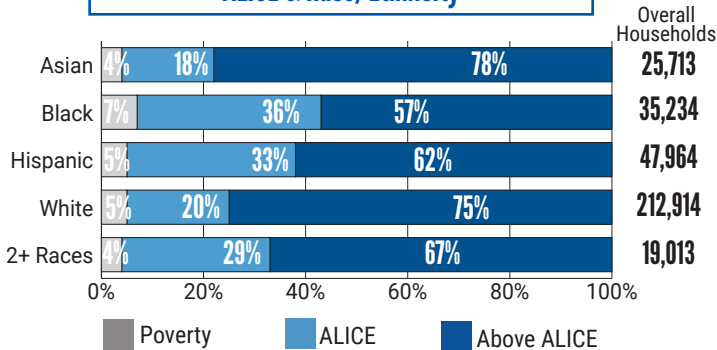
INCOME
CONSTRAINED



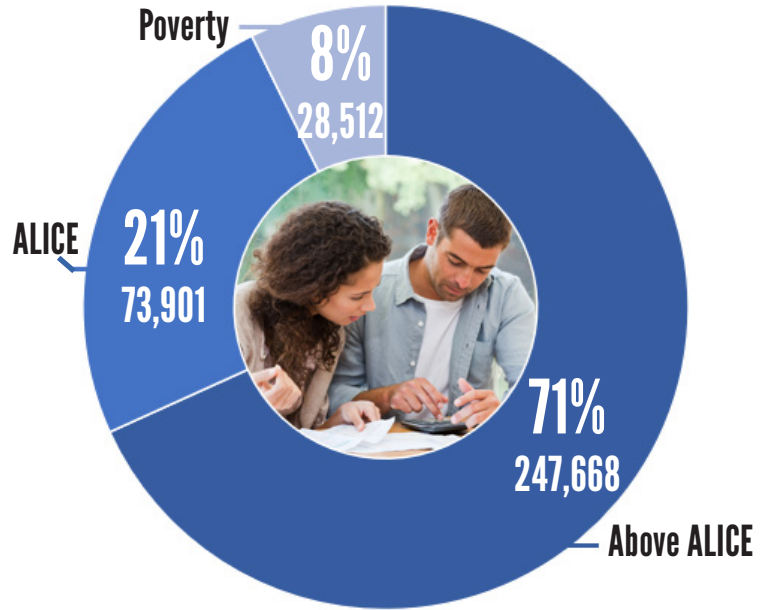
EMPLOYED

They are friends, family, and neighbors who go to work daily, but struggle with basic costs of living: housing, childcare, transportation, healthcare, etc.

ALICE & Race/Ethnicity



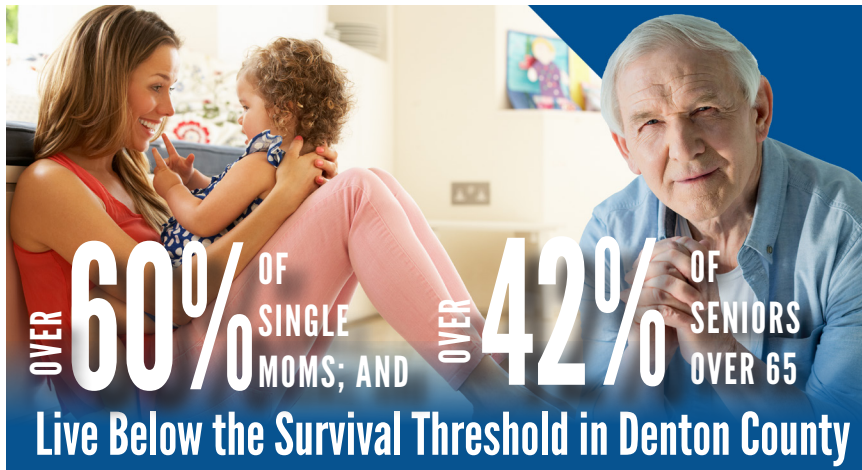
DENTON COUNTY HOUSEHOLDS



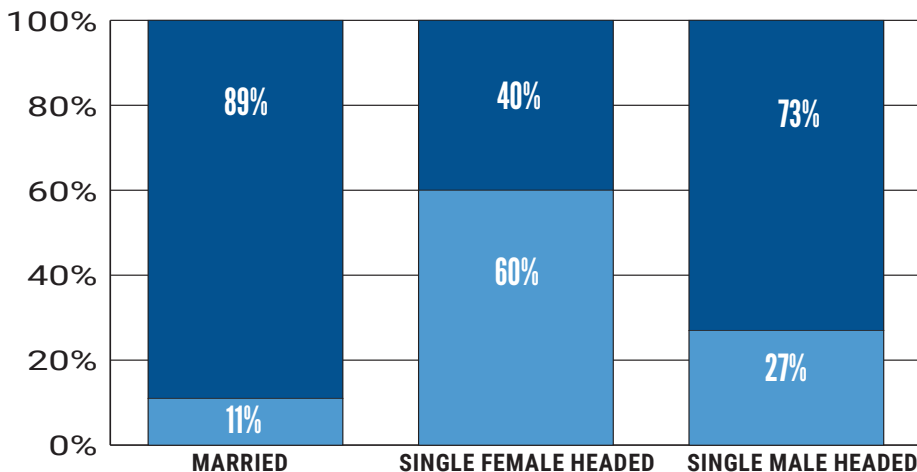
With Poverty & ALICE Households Combined

OVER 102,000

Denton County Households
Earn Less Than Their Household Expenses
MONTH AFTER MONTH



ALICE Data by Family Type Denton County, 2021



That's **1 in 3**
DENTON COUNTY
HOUSEHOLDS

Above ALICE

Below ALICE Threshold

To view the entire Community Needs Assessment
visit [UnitedWayDenton.org/Needs](https://www.unitedwaydenton.org/Needs)

HOUSING & HOMELESSNESS

BETWEEN JULY 2021-JULY 2022

HOMELESSNESS
ACROSS DENTON COUNTY
INCREASED  **43%**

AS REPORTED IN DENTON COUNTY HOMELESSNESS DATA DASHBOARD

**HUD* DEFINITION OF AFFORDABLE HOUSING =
< 30% OF A FAMILY'S GROSS INCOME.**

In most Denton County communities,
many households exceed the affordability
threshold living in houses & apartments
they cannot afford.

*US Department of Housing & Urban Development

TOP FIVE SELF-REPORTED CAUSES OF HOMELESSNESS:



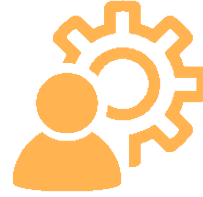
Family/Personal
Issues



Inability to Pay
Rent & Utilities



Unemployment



Lack of Assistance
& Resources



Physical &/or
Mental Disabilities

HOMELESS STUDENTS IN DENTON COUNTY

CITY	OCT 2022	FEB 2023
Argyle ISD	0	0
Aubrey ISD	no data	no data
Denton ISD	347	587
Krum ISD	no data	no data
Lake Dallas ISD	12	no data
Lewisville ISD	820	1,024
Little Elm ISD	62	99
Northwest ISD	no data	199
Pilot Point ISD	no data	no data
Ponder ISD	20	19
Sanger ISD	58	79
TOTALS	1,319	2,007



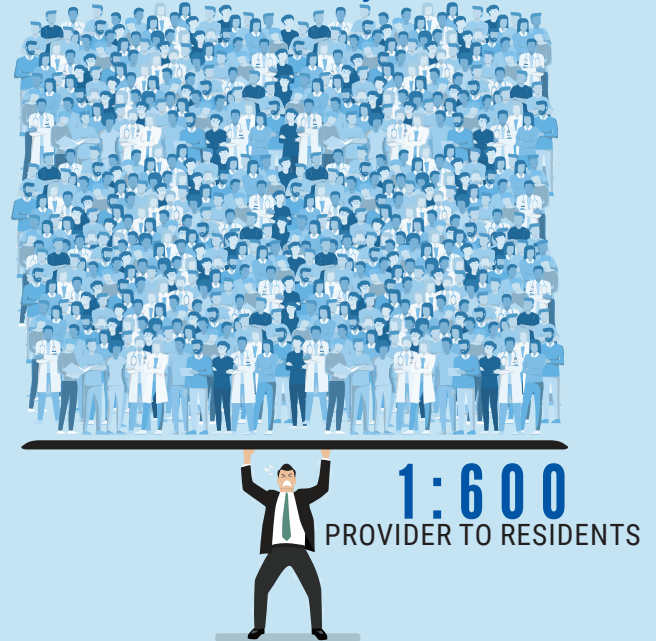
MENTAL HEALTH

MENTAL HEALTH PROVIDER TO PERSON RATIO

Top 10% of Counties



Denton County

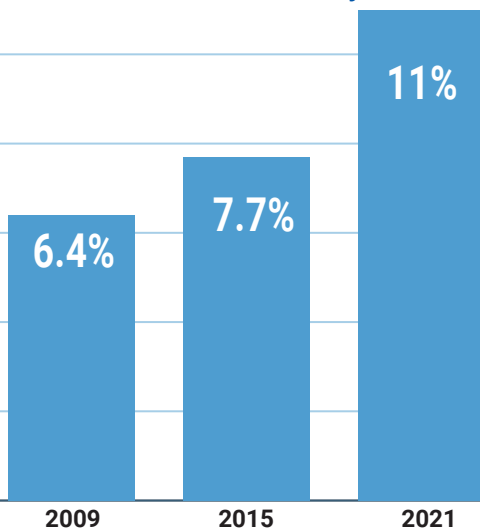


According to the 2022 Mental Health in America Report,
**TEXAS RANKS 51 OUT OF 51 FOR ACCESS
TO MENTAL HEALTH CARE.**



52.6% of people experiencing homelessness report a diagnosable mental illness

Diagnosed Mental Illness in Children in Denton County



1 in 5 People in Denton County experience a
MENTAL HEALTH CRISIS in a year.

VETERANS

More than
41,000
Veterans call
Denton County home.

Many encounter unique hardships
after transitioning back to civilian life.



VETERANS MENTAL HEALTH:
54% INCREASE

in occurrences of PTSD since the start of pandemic

More than **1 in 10** Veterans have
a substance
use disorder



Veterans assessed through the Department of Veterans Affairs in
2020 determined:

1 in **3** females

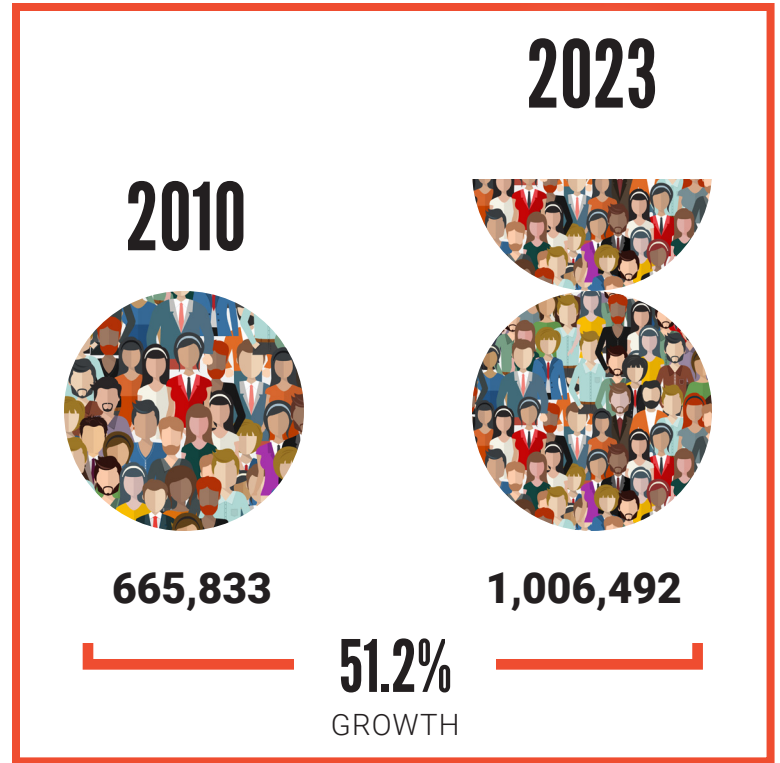
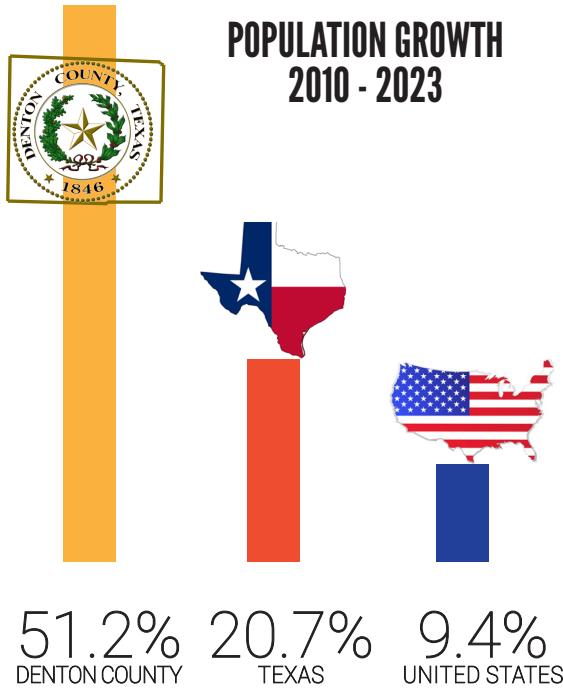
1 in **50** males



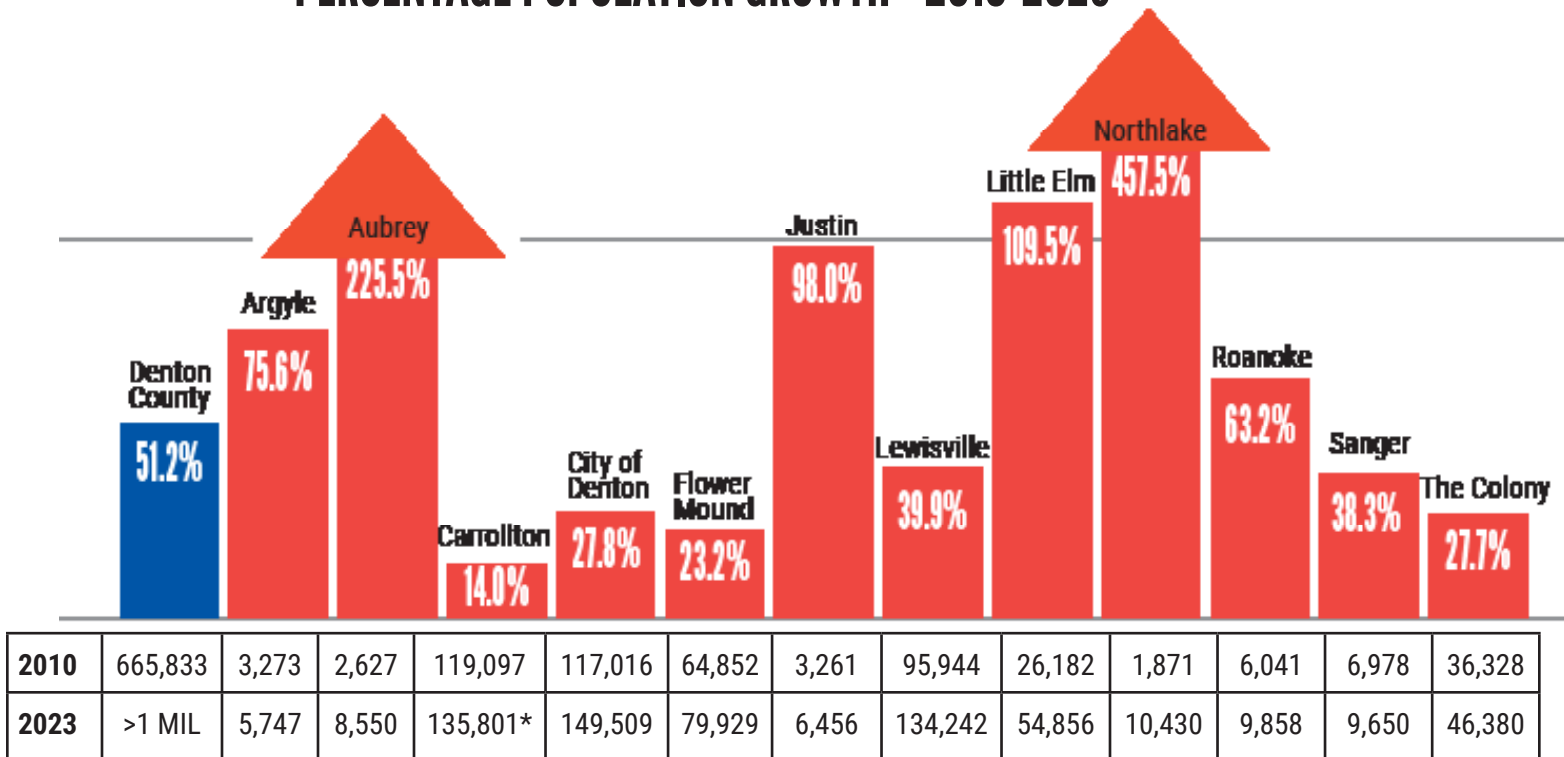
experience Military Sexual Trauma

DEMOGRAPHICS

Denton County continues to be one of the fastest-growing communities in the nation. With such exciting growth comes not only great opportunity, but great challenge as the needs of our community continue to grow as well.



PERCENTAGE POPULATION GROWTH - 2010-2023



*60% of population in Denton County

We empower neighbors to invest in one another to help the Denton County community thrive.

WORKING TOGETHER, WE IDENTIFY NEEDS, IMPLEMENT SOLUTIONS, AND IMPROVE LIVES.

When we **LIVE UNITED**, we create opportunities to:



#GiveToOneImpactMany

UnitedWayDentonCounty.org

1314 Teasley Lane
Denton, TX 76205
940-566-5851

