

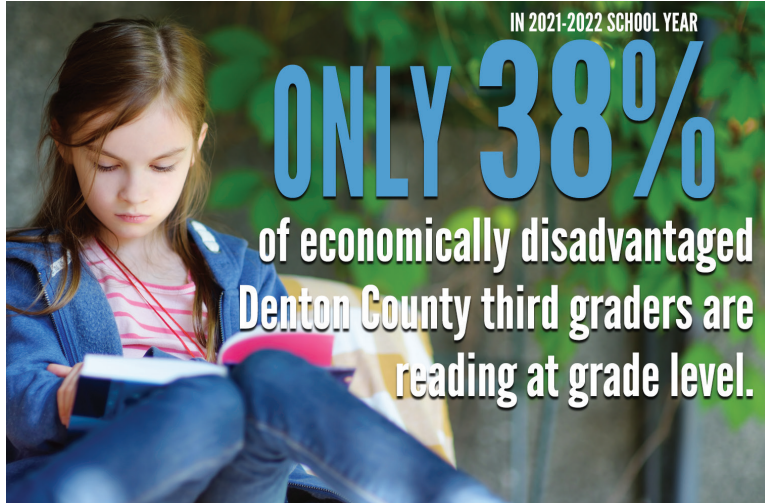


# COMMUNITY NEEDS ASSESSMENT AT A GLANCE

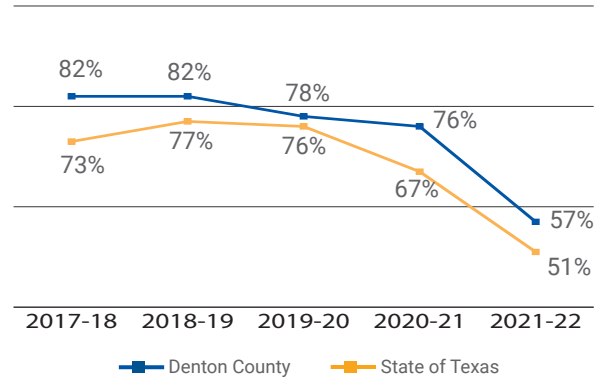


Updated August 2023

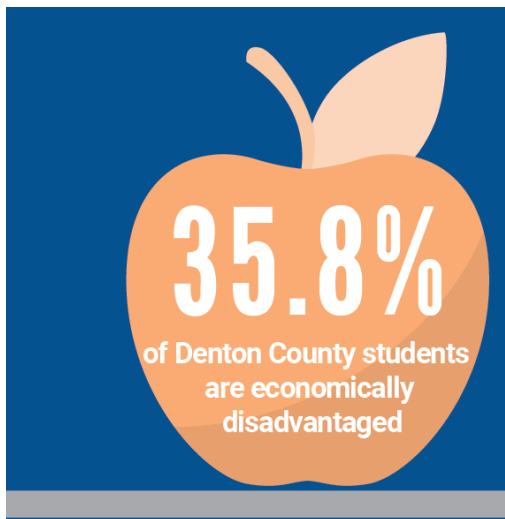
# CHILDREN



PERCENTAGE OF ALL THIRD GRADERS READING AT GRADE LEVEL: DENTON COUNTY VS. STATE



Third grade reading scores are predictive of both graduation and incarceration rates. Both locally and statewide, the proportion of third-graders reading at grade-level is falling.



**14** CONSECUTIVE YEARS THE NUMBER OF  
ECONOMICALLY DISADVANTAGED STUDENTS  
IN DENTON COUNTY HAS INCREASED.

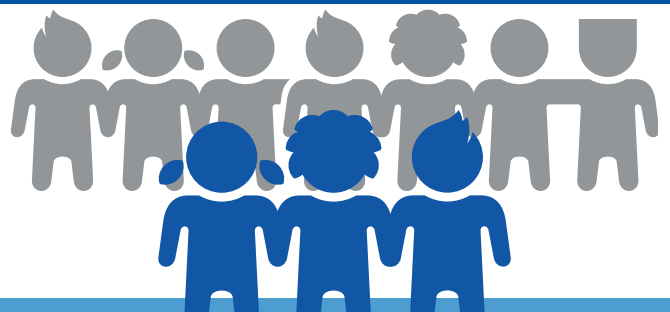


**MORE THAN 1 in 3** DENTON COUNTY STUDENTS  
**ARE AT RISK OF DROPPING OUT OF SCHOOL**

From March 2020 to September 2021

**DENTON COUNTY-BASED  
CHILDCARE CAPACITY**

**DROPPED 24.5%**



Nearly 7 of 10 foster care children are placed  
**OUTSIDE** of Denton County due to a lack of  
placement options.



# FAMILIES

## YOU KNOW ALICE



ASSET  
LIMITED



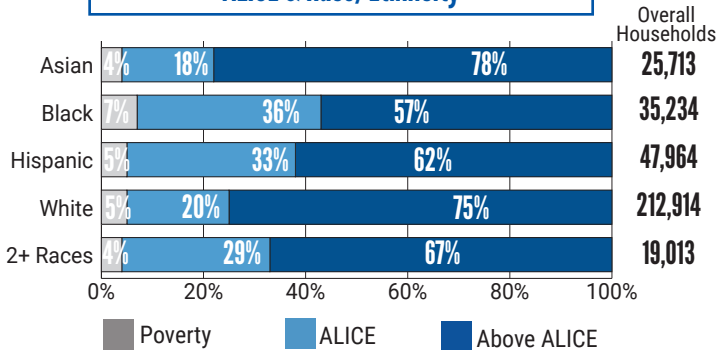
INCOME  
CONSTRAINED



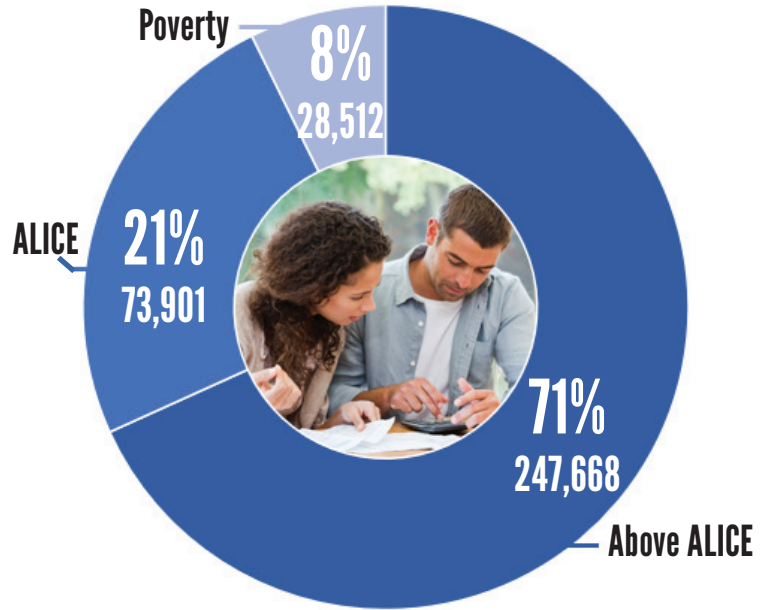
EMPLOYED

They are friends, family, and neighbors who go to work daily, but struggle with basic costs of living: housing, childcare, transportation, healthcare, etc.

### ALICE & Race/Ethnicity



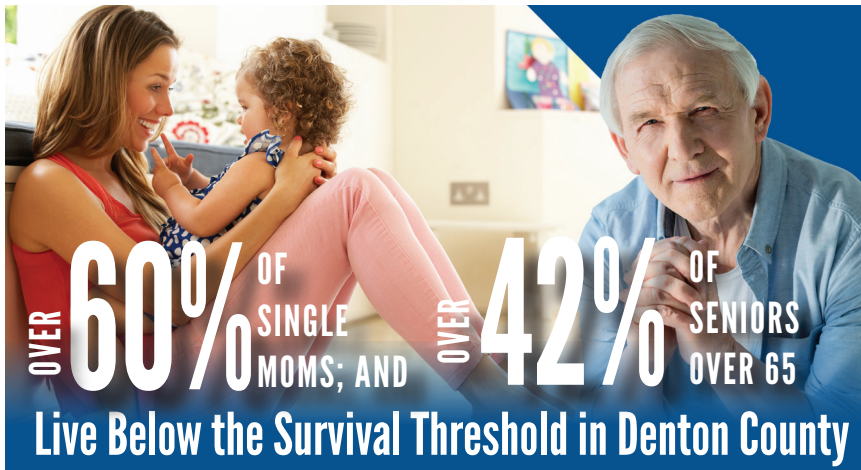
## DENTON COUNTY HOUSEHOLDS



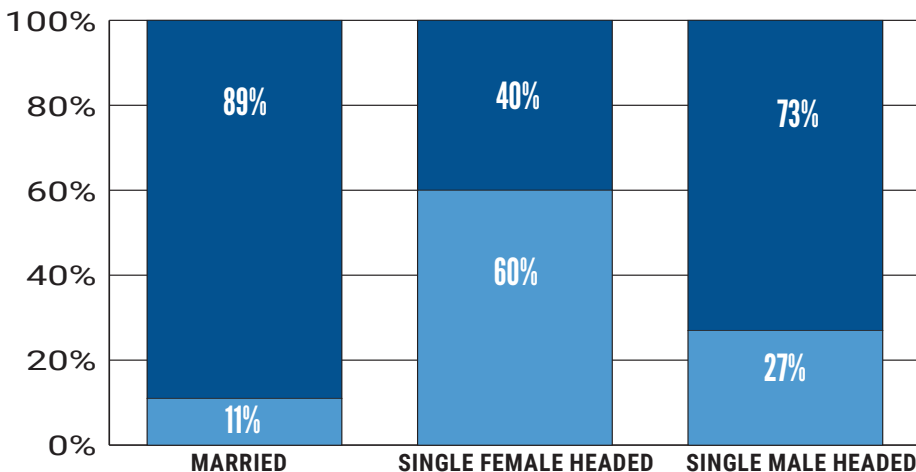
With Poverty & ALICE Households Combined

**OVER 102,000**

Denton County Households  
Earn Less Than Their Household Expenses  
**MONTH AFTER MONTH**



### ALICE Data by Family Type Denton County, 2021



That's **1 in 3**  
**DENTON COUNTY**  
**HOUSEHOLDS**

Above ALICE

Below ALICE Threshold

To view the entire Community Needs Assessment  
visit [UnitedWayDenton.org/Needs](https://www.unitedwaydenton.org/Needs)

# HOUSING & HOMELESSNESS

BETWEEN JULY 2021-JULY 2022

HOMELESSNESS  
ACROSS DENTON COUNTY  
INCREASED  **43%**

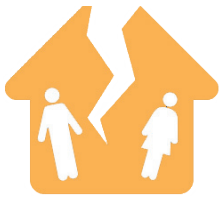
AS REPORTED IN DENTON COUNTY HOMELESSNESS DATA DASHBOARD

**HUD\* DEFINITION OF AFFORDABLE HOUSING =  
< 30% OF A FAMILY'S GROSS INCOME.**

In most Denton County communities, many households exceed the affordability threshold living in houses & apartments they cannot afford.

\*US Department of Housing & Urban Development

## TOP FIVE SELF-REPORTED CAUSES OF HOMELESSNESS:



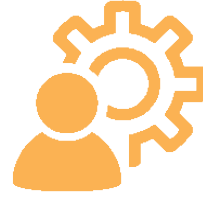
Family/Personal  
Issues



Inability to Pay  
Rent & Utilities



Unemployment



Lack of Assistance  
& Resources



Physical &/or  
Mental Disabilities

## HOMELESS STUDENTS IN DENTON COUNTY

CITY	OCT 2022	FEB 2023
Argyle ISD	0	0
Aubrey ISD	no data	no data
Denton ISD	347	587
Krum ISD	no data	no data
Lake Dallas ISD	12	no data
Lewisville ISD	820	1,024
Little Elm ISD	62	99
Northwest ISD	no data	199
Pilot Point ISD	no data	no data
Ponder ISD	20	19
Sanger ISD	58	79
<b>TOTALS</b>	<b>1,319</b>	<b>2,007</b>



To view the entire Community Needs Assessment visit [UnitedWayDenton.org/Needs](https://UnitedWayDenton.org/Needs)



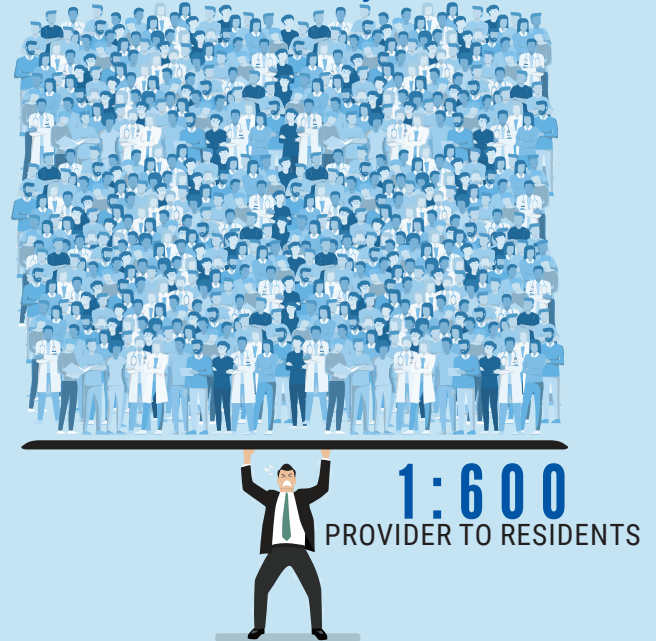
# MENTAL HEALTH

## MENTAL HEALTH PROVIDER TO PERSON RATIO

### Top 10% of Counties



### Denton County

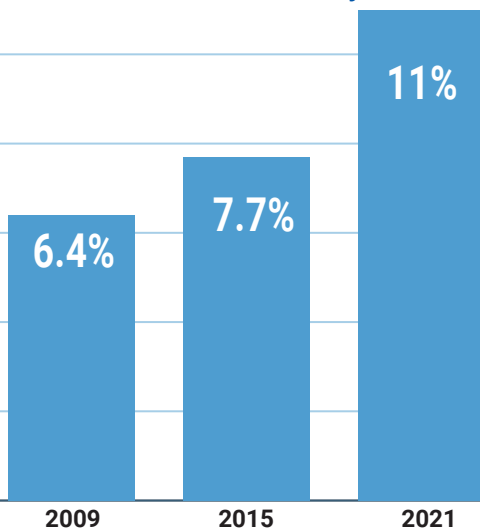


According to the 2022 Mental Health in America Report,  
**TEXAS RANKS 51 OUT OF 51 FOR ACCESS  
TO MENTAL HEALTH CARE.**



**52.6%** of people experiencing homelessness report a diagnosable mental illness

### Diagnosed Mental Illness in Children in Denton County



**1 in 5** People in Denton County experience a  
**MENTAL HEALTH CRISIS** in a year.

To view the entire Community Needs Assessment visit [UnitedWayDenton.org/Needs](https://UnitedWayDenton.org/Needs)

# VETERANS

More than  
**41,000**  
Veterans call  
Denton County home.

Many encounter unique hardships  
after transitioning back to civilian life.



VETERANS MENTAL HEALTH:  
**54% INCREASE**

in occurrences of PTSD since the start of pandemic

More than **1 in 10** Veterans have  
a substance  
use disorder



Veterans assessed through the Department of Veterans Affairs in  
2020 determined:

**1 in 3** females

**1 in 50** males

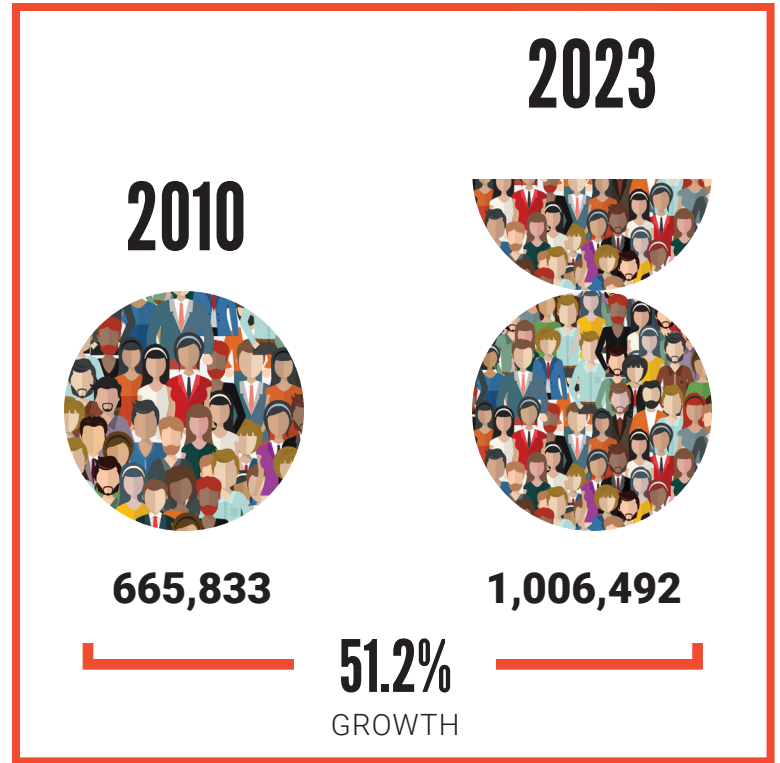
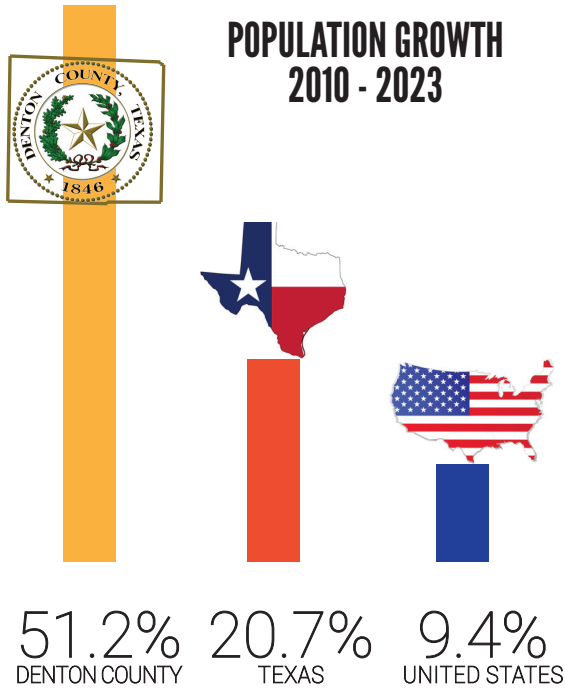


experience Military Sexual Trauma

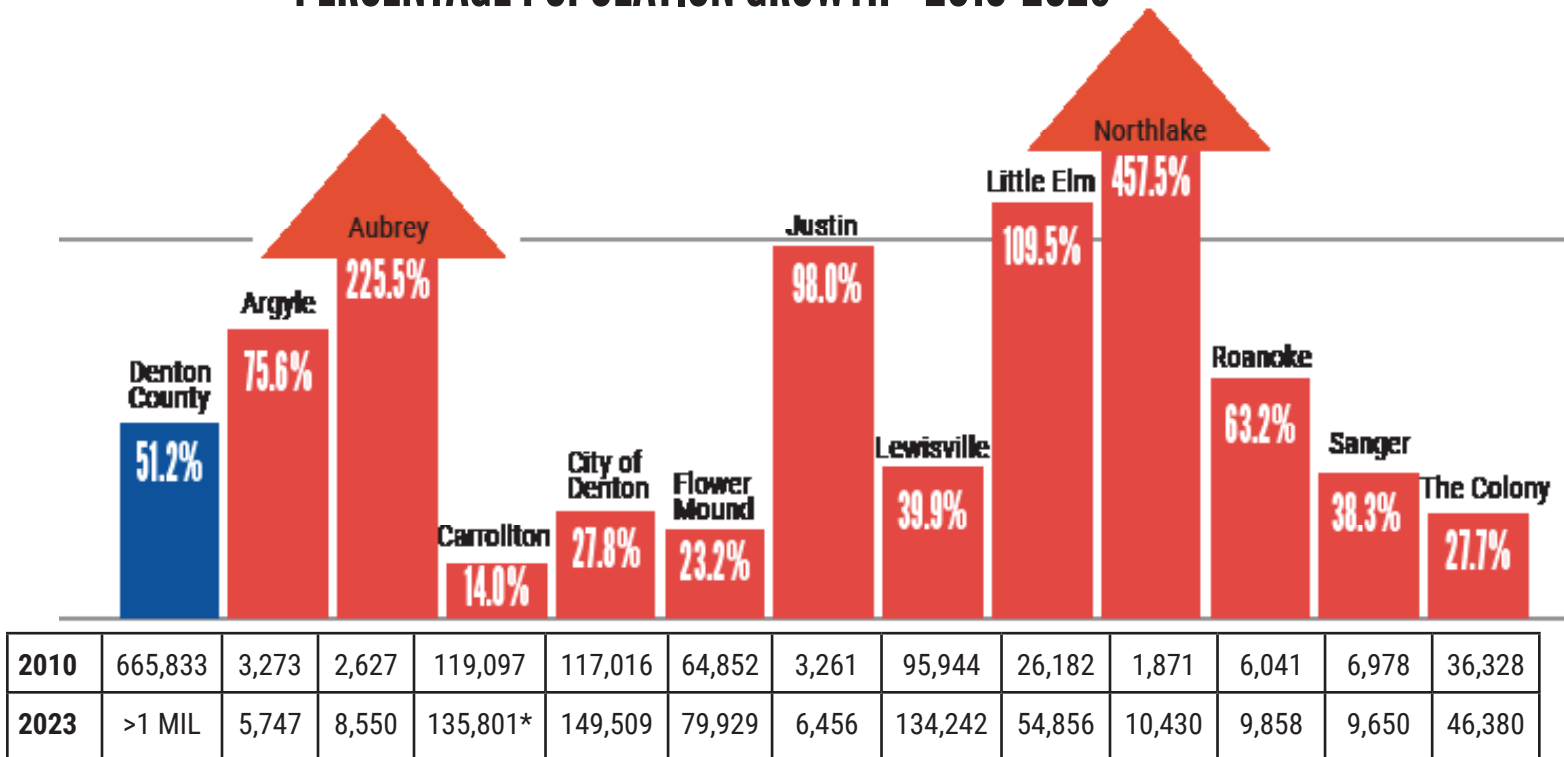


# DEMOGRAPHICS

Denton County continues to be one of the fastest-growing communities in the nation. With such exciting growth comes not only great opportunity, but great challenge as the needs of our community continue to grow as well.



## PERCENTAGE POPULATION GROWTH - 2010-2023



\*60% of population in Denton County

To view the entire Community Needs Assessment visit [UnitedWayDenton.org/Needs](https://UnitedWayDenton.org/Needs)

# WE EMPOWER DONORS, VOLUNTEERS, BUSINESSES, GOVERNMENTS, NONPROFITS AND COMMUNITY GROUPS TO INVEST IN NEIGHBORS FOR A BETTER DENTON COUNTY COMMUNITY.

We LIVE UNITED to strengthen education, financial stability, and health and mental health across our community. Working together, we identify the community's most critical needs and implement collaborative, innovative solutions to provide greater opportunity for every person in Denton County.

**When we LIVE UNITED, we create opportunities to:**



**UnitedWayDentonCounty.org**

1314 Teasley Lane  
Denton, TX 76205  
940-566-5851

